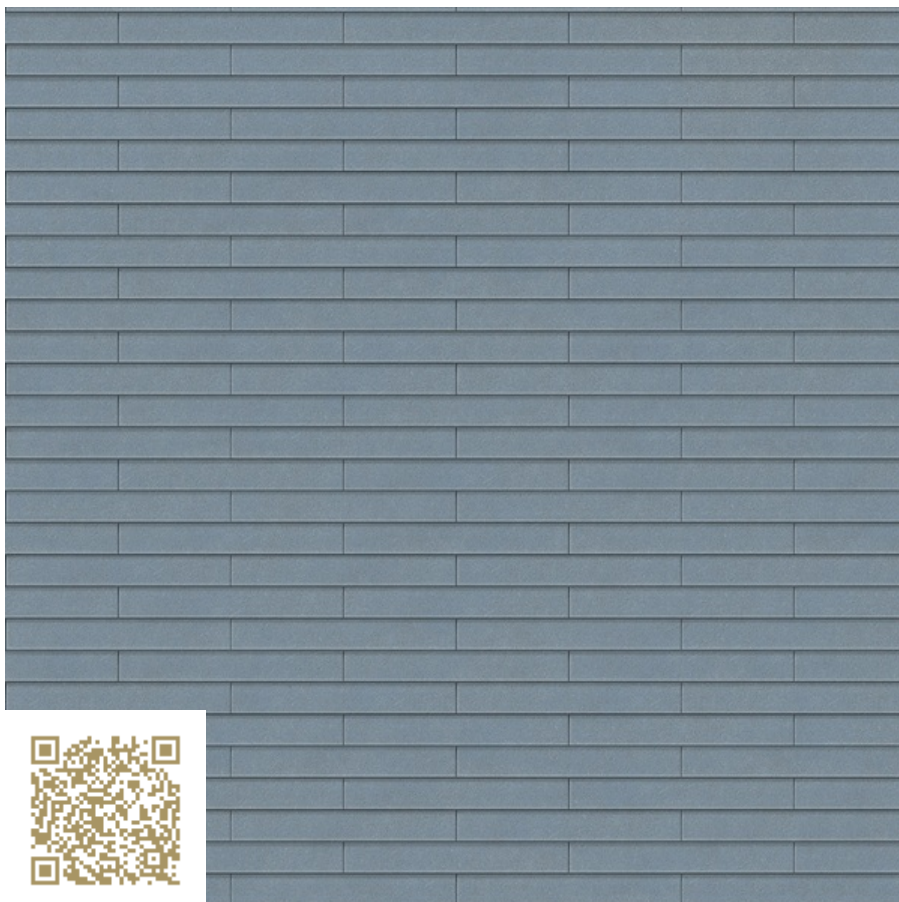


**SWISS
pearl®**

VIEW

NOBILIS Azurite 422
CLINAR 1200x200
Swisspearl Schweiz AG

<https://www.swisspearl.ch/> | info@ch.swisspearl.com

Type: Fiber cement | Facade slate

With their slender, long form, CLINAR panels create a lively facade, elegant and unique. Different formats and patterns, as well as the attractive range of colors, allow for a customized design. Installation and design details for durable CLINAR formats are based on trusted and efficient construction techniques that can be mounted by just a single worker. This ensures efficiency, reliable protection and value retention.

mtextur ID	97121
Manufacturer	Swisspearl Schweiz AG
Manufacturer-Email	info@ch.swisspearl.com
Product Line	CLINAR 1200x200
Product Line Info	With their slender, long form, CLINAR panels create a lively facade, elegant and unique. Different formats and patterns, as well as the attractive range of colors, allow for a customized design. Installation and design details for durable CLINAR formats are based on trusted and efficient construction techniques that can be mounted by just a single worker. This ensures efficiency, reliable protection and value retention.
Material Name	NOBILIS Azurite 422
Type	Fiber cement / Facade slate
eBKP	E 2.3 Facade cladding / E 2.3 Fassadenbekleidung / E 2.4 Facade systems / E 2.4 Fassadensystem
IFC	IfcCovering / IfcCurtainWall
Area of application (mtextur Classic)	Outside / Wall / Facade
Delivery zones	CH / DE / AT / CA / US / LI / SI
Size of the CAD & BIM texture	Height: 3060.0 mm / Width: 4800.0 mm

IMPORTANT LEGAL INFORMATION FOR USAGE OF THE MTEXTUR-DATABASE AND MTEXTUR DATASHEET:

In the mtextur-database and the mtextur-datasheet you can find a variety of high-quality digitalized materials, classified according material-type and subtype, color scope, field of application, manufacturer and product-line. The liability of the colors and the pattern of a CAD-texture can not always be guaranteed. For binding samples and additional questions please get in contact with the manufacturer or reseller directly (request link on material page). The information found on the mtextur-database is carefully collected and tested. Nevertheless are there possibilities for mistakes or wrong information. The publisher, h2c GmbH, the according manufacturers and resellers are not liable for any missing or incorrect information and its outcome, except h2c GmbH acts insofar willful.

Characteristics Info	Lasierende Farben in anmutigen noblen Grautönen
----------------------	---

IMPORTANT LEGAL INFORMATION FOR USAGE OF THE MTEXTUR-DATABASE AND MTEXTUR DATASHEET:
In the mtextur-database and the mtextur-datasheet you can find a variety of high-quality digitalized materials, classified according material-type and subtype, color scope, field of application, manufacturer and product-line. The liability of the colors and the pattern of a CAD-texture can not always be guaranteed. For binding samples and additional questions please get in contact with the manufacturer or reseller directly (request link on material page). The information found on the mtextur-database is carefully collected and tested. Nevertheless are there possibilities for mistakes or wrong information. The publisher, h2c GmbH, the according manufacturers and resellers are not liable for any missing or incorrect information and its outcome, except h2c GmbH acts insofar willful.