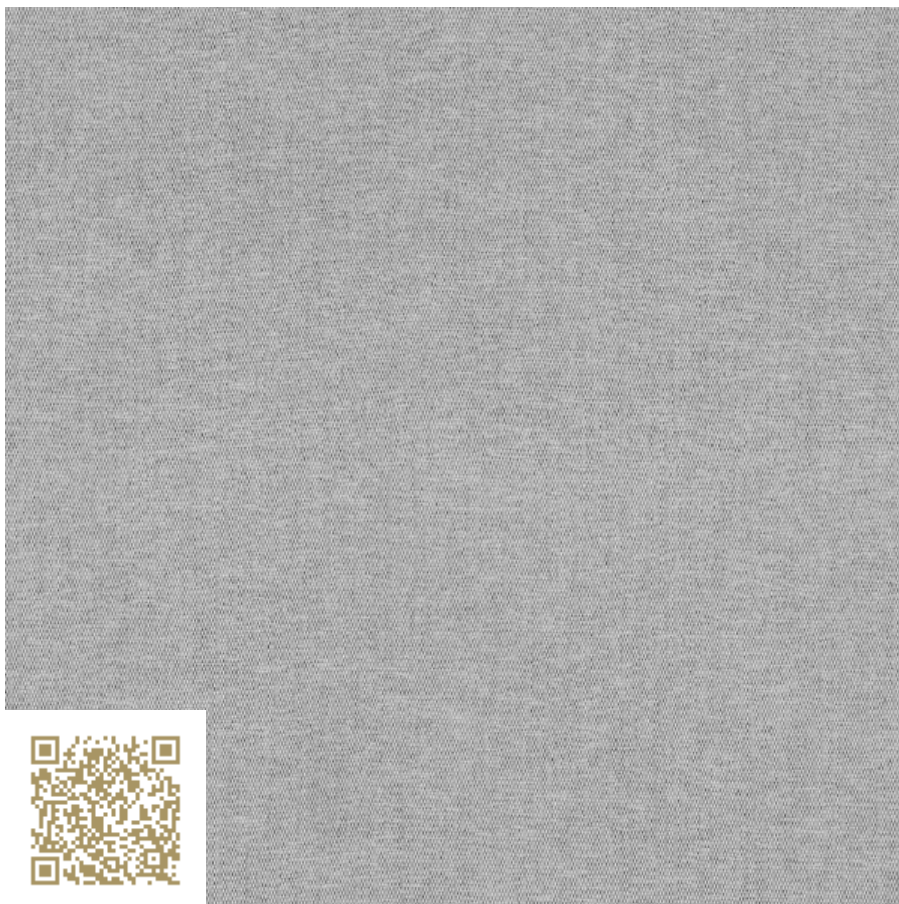


**CRÉATION  
BAUMANN**

VIEW

**Col. 0181**  
**LORD IV**  
**Création Baumann**

<https://www.creationbaumann.com/> | [mail@creationbaumann.com](mailto:mail@creationbaumann.com)

**Type:**     **Curtain fabric | Dense**

100% Polyester flammhemmend (Trevira CS)

Dichter Vorhangstoff; Melierter Basic-Artikel in Trevira CS. Lord IV besticht durch den weichen Fall und die strukturierte Oberfläche. Der strapazierfähige Stoff mit gutem Absorptionswert lässt sich vielseitig sowohl als Vorhang wie auch als Möbelstoff einsetzen.

|                                       |   |
|---------------------------------------|---|
| mtextur ID                            | 90817   |
| Manufacturer                          | Création Baumann  |
| Manufacturer-Email                    | mail@creationbaumann.com  |
| Product Line                          | LORD IV   |
| Product Line Info                     | Dichter Vorhangstoff; Melierter Basic-Artikel in Trevira CS. Lord IV besticht durch den weichen Fall und die strukturierte Oberfläche. Der strapazierfähige Stoff mit gutem Absorptionswert lässt sich vielseitig sowohl als Vorhang wie auch als Möbelstoff einsetzen. |
| Material Name                         | Col. 0181   |
| Type                                  | Curtain fabric / Dense  |
| Material Info                         | 100% Polyester flammhemmend (Trevira CS)  |
| IFC                                   | IfcCovering / IfcFurniture / IfcWall  |
| Area of application (mtextur Classic) | Inside / Wall / Furniture   |
| Delivery zones                        | CH / DE / AT / LI   |

#### IMPORTANT LEGAL INFORMATION FOR USAGE OF THE MTEXTUR-DATABASE AND MTEXTUR DATASHEET:

In the mtextur-database and the mtextur-datasheet you can find a variety of high-quality digitalized materials, classified according material-type and subtype, color scope, field of application, manufacturer and product-line. The liability of the colors and the pattern of a CAD-texture can not always be guaranteed. For binding samples and additional questions please get in contact with the manufacturer or reseller directly (request link on material page). The information found on the mtextur-database is carefully collected and tested. Nevertheless are there possibilities for mistakes or wrong information. The publisher, h2c GmbH, the according manufacturers and resellers are not liable for any missing or incorrect information and its outcome, except h2c GmbH acts insofar willful.

|                      |  |
|----------------------|--|
| max. Length / Format | Width = 1500 mm  |
| Weight               | 0.349 kg/m <sup>2</sup>  |
| Sound absorption     | 0.75 $\alpha_w$  |
| Characteristics Info | Dichte Vorhangstoffe von Création Baumann sorgen im öffentlichen wie im privaten Bereich für anspruchsvolle Diskretion. Unser umfangreiches Sortiment an hochwertigen Textilien bietet Ihnen ideale Lösungen zum Schutz der Privatsphäre. Und steigert das Wohlbefinden in zeitlosem Design. |

**IMPORTANT LEGAL INFORMATION FOR USAGE OF THE MTEXTUR-DATABASE AND MTEXTUR DATASHEET:**

In the mtextur-database and the mtextur-datasheet you can find a variety of high-quality digitalized materials, classified according material-type and subtype, color scope, field of application, manufacturer and product-line. The liability of the colors and the pattern of a CAD-texture can not always be guaranteed. For binding samples and additional questions please get in contact with the manufacturer or reseller directly (request link on material page). The information found on the mtextur-database is carefully collected and tested. Nevertheless are there possibilities for mistakes or wrong information. The publisher, h2c GmbH, the according manufacturers and resellers are not liable for any missing or incorrect information and its outcome, except h2c GmbH acts insofar willful.