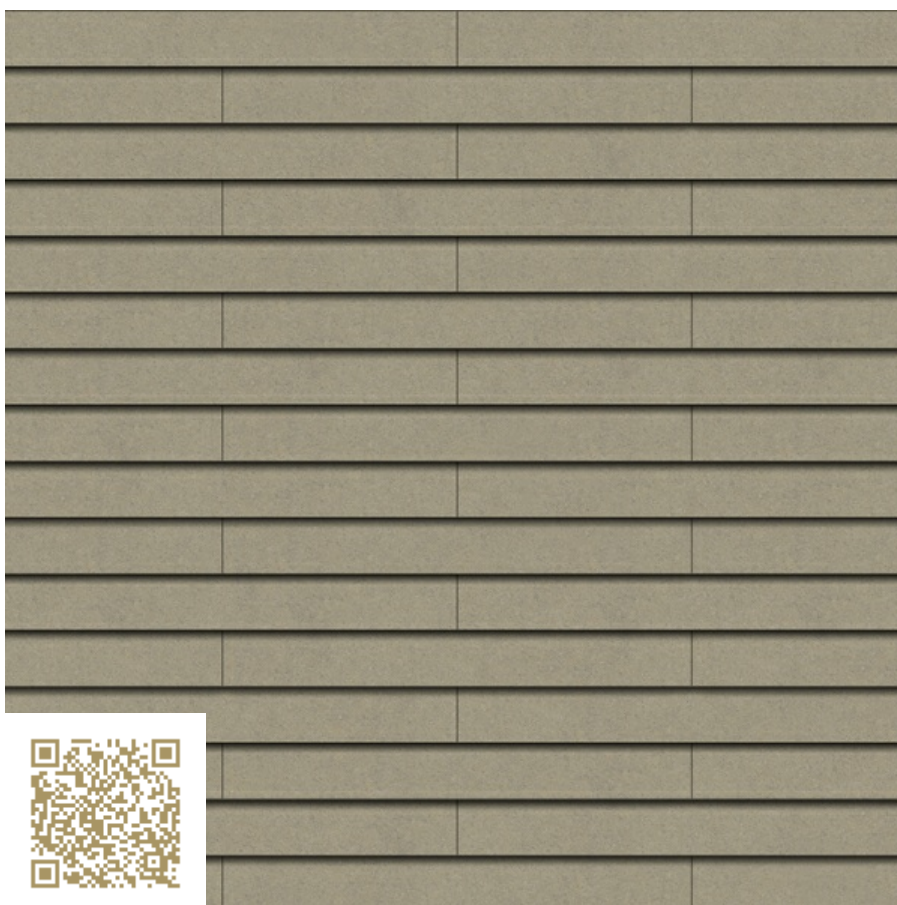


**SWISS
pearl®**

VIEW

NOBILIS Granite 624

MODULA 2500x300**Swisspearl Schweiz AG**

<https://www.swisspearl.com/> | info@swisspearl.com

Type: **Fiber cement | Facade slate**

The horizontal Modula structure has a fine architectonic rhythm. The slim panels, available in two different lengths, are installed as lapped coverings and can be arranged both with continuous and with offset vertical joints. A large number of different surfaces and colors enable numerous additional design variants.

Whether monochrome or multicolored, equal or varying format lengths, with continuous or offset joints – Modula provides immense scope for individual combinations.

| | |
|---------------------------------------|--|
| mtextur ID | 16062 |
| Manufacturer | Swisspearl Schweiz AG |
| Manufacturer-Email | info@swisspearl.com |
| Product Line | MODULA 2500x300 |
| Product Line Info | <p>The horizontal Modula structure has a fine architectonic rhythm. The slim panels, available in two different lengths, are installed as lapped coverings and can be arranged both with continuous and with offset vertical joints. A large number of different surfaces and colors enable numerous additional design variants.</p> <p>Whether monochrome or multicolored, equal or varying format lengths, with continuous or offset joints – Modula provides immense scope for individual combinations.</p> |
| Material Name | NOBILIS Granite 624 |
| Type | Fiber cement / Facade slate |
| eBKP | E 2.3 Facade cladding / E 2.3 Fassadenbekleidung / E 2.4 Facade systems / E 2.4 Fassadensystem |
| IFC | IfcCovering / IfcCurtainWall |
| Area of application (mtextur Classic) | Outside / Wall / Facade |
| Delivery zones | CH / DE / AT / CA / US / LI / SI |

IMPORTANT LEGAL INFORMATION FOR USAGE OF THE MTEXTUR-DATABASE AND MTEXTUR DATASHEET:

In the mtextur-database and the mtextur-datasheet you can find a variety of high-quality digitalized materials, classified according material-type and subtype, color scope, field of application, manufacturer and product-line. The liability of the colors and the pattern of a CAD-texture can not always be guaranteed. For binding samples and additional questions please get in contact with the manufacturer or reseller directly (request link on material page). The information found on the mtextur-database is carefully collected and tested. Nevertheless are there possibilities for mistakes or wrong information. The publisher, h2c GmbH, the according manufacturers and resellers are not liable for any missing or incorrect information and its outcome, except h2c GmbH acts insofar willful.

| | |
|----------------------|--|
| max. Length / Format | Length = 2500 mm / Width = 300 mm / Thickness = 8 mm |
| min. Format | Length = 1500 mm / Width = 300 mm / Thickness = 8 mm |
| Characteristics Info | Lasierende Farben in anmutigen noblen Grautönen |

IMPORTANT LEGAL INFORMATION FOR USAGE OF THE MTEXTUR-DATABASE AND MTEXTUR DATASHEET:

In the mtextur-database and the mtextur-datasheet you can find a variety of high-quality digitalized materials, classified according material-type and subtype, color scope, field of application, manufacturer and product-line. The liability of the colors and the pattern of a CAD-texture can not always be guaranteed. For binding samples and additional questions please get in contact with the manufacturer or reseller directly (request link on material page). The information found on the mtextur-database is carefully collected and tested. Nevertheless are there possibilities for mistakes or wrong information. The publisher, h2c GmbH, the according manufacturers and resellers are not liable for any missing or incorrect information and its outcome, except h2c GmbH acts insofar willful.