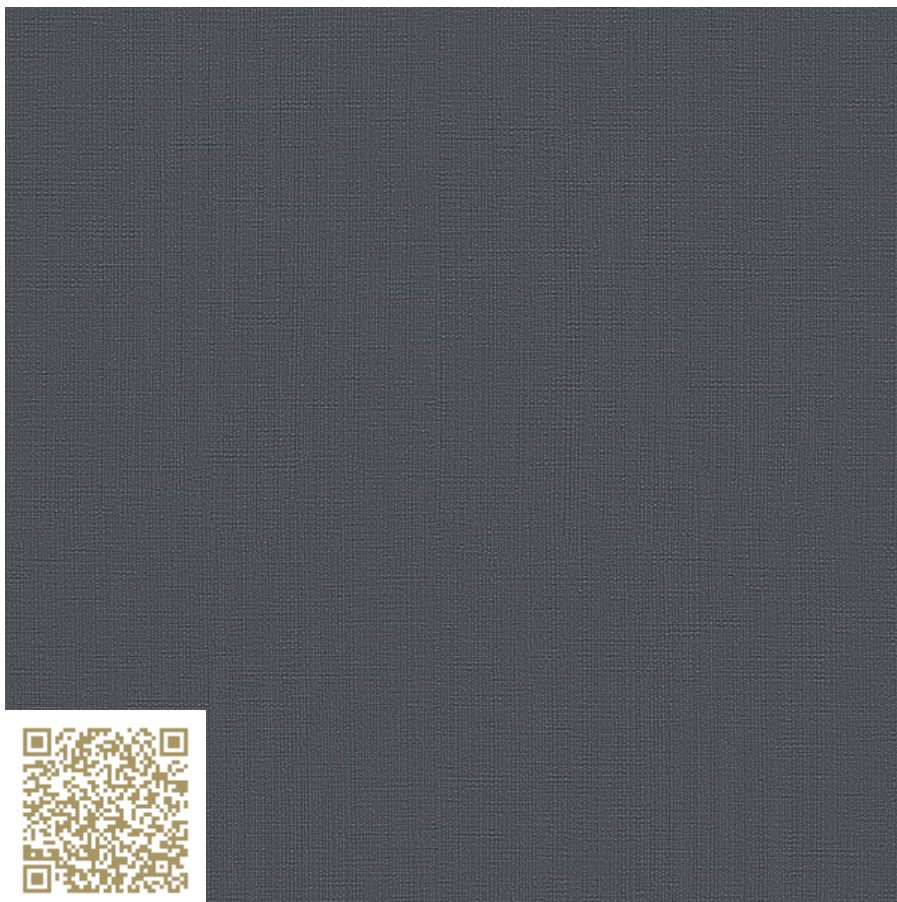


**CRÉATION
BAUMANN**

VIEW

Col. 159
PONTE IV
Création Baumann

<https://www.creationbaumann.com/> | mail@creationbaumann.com

Type: Curtain fabric | Dense

100% Polyester flammhemmend (Trevira CS)

Dekorationsstoff; Der edel schimmernde Uni Artikel aus 100% flammhemmenden Trevira CS Garnen erinnert mit seiner ausgeprägten Gewebestruktur mit leichten Flammen und Noppen an Seide oder Leinen. Unterschiedlich farbige Kett- und Schussgarne verleihen Ponte III Farbtiefe und den charakteristischen Changeant-Effekt.

mtextur ID	114392
Manufacturer	Création Baumann
Manufacturer-Email	mail@creationbaumann.com
Product Line	PONTE IV
Product Line Info	Dekorationsstoff; Der edel schimmernde Uni Artikel aus 100% flammhemmenden Trevira CS Garnen erinnert mit seiner ausgeprägten Gewebestruktur mit leichten Flammen und Noppen an Seide oder Leinen. Unterschiedlich farbige Kett- und Schussgarne verleihen Ponte III Farbtiefe und den charakteristischen Changeant-Effekt.
Material Name	Col. 159
Type	Curtain fabric / Dense
Material Info	100% Polyester flammhemmend (Trevira CS)
IFC	IfcCovering / IfcFurniture / IfcWall
Area of application (mtextur Classic)	Inside / Wall / Furniture
Delivery zones	CH / DE / AT / LI

IMPORTANT LEGAL INFORMATION FOR USAGE OF THE MTEXTUR-DATABASE AND MTEXTUR DATASHEET:

In the mtextur-database and the mtextur-datasheet you can find a variety of high-quality digitalized materials, classified according material-type and subtype, color scope, field of application, manufacturer and product-line. The liability of the colors and the pattern of a CAD-texture can not always be guaranteed. For binding samples and additional questions please get in contact with the manufacturer or reseller directly (request link on material page). The information found on the mtextur-database is carefully collected and tested. Nevertheless are there possibilities for mistakes or wrong information. The publisher, h2c GmbH, the according manufacturers and resellers are not liable for any missing or incorrect information and its outcome, except h2c GmbH acts insofar willful.

max. Length / Format	Width = 1600 mm
Weight	0.242 kg/m ²
Sound absorption	0.5 α_w
Lightfastness	6
Characteristics Info	Dichte Vorhangstoffe von Création Baumann sorgen im öffentlichen wie im privaten Bereich für anspruchsvolle Diskretion. Unser umfangreiches Sortiment an hochwertigen Textilien bietet Ihnen ideale Lösungen zum Schutz der Privatsphäre. Und steigert das Wohlbefinden in zeitlosem Design.

IMPORTANT LEGAL INFORMATION FOR USAGE OF THE MTEXTUR-DATABASE AND MTEXTUR DATASHEET:

In the mtextur-database and the mtextur-datasheet you can find a variety of high-quality digitalized materials, classified according material-type and subtype, color scope, field of application, manufacturer and product-line. The liability of the colors and the pattern of a CAD-texture can not always be guaranteed. For binding samples and additional questions please get in contact with the manufacturer or reseller directly (request link on material page). The information found on the mtextur-database is carefully collected and tested. Nevertheless are there possibilities for mistakes or wrong information. The publisher, h2c GmbH, the according manufacturers and resellers are not liable for any missing or incorrect information and its outcome, except h2c GmbH acts insofar willful.