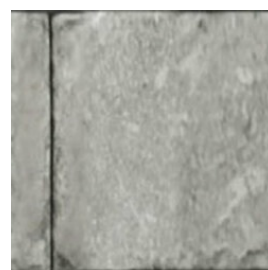
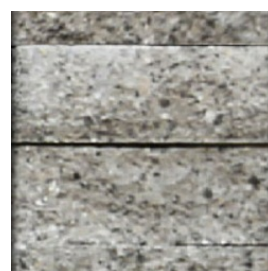


**CREABETON**

CUT LENGTHWISE



CUT CROSSWISE

VIEW

Grau

SPLITTWALL Mauersystem

CREABETON AG

<https://creabeton.ch/> | info@creabeton.ch

Type: Stone | Building stone

Die SPLITTWALL Mauer entsteht durch wildes Verlegen der drei Steinlängen und das Vermeiden von Kreuzfugen. Die einzelnen Steine sind einheitlich 7.5 cm dick und verhältnismässig leicht, was sie mühelos versetzen lässt. Der Natursteineffekt entsteht durch die Beimengung von feinem Splitt in die Betonmasse. SPITTWALL kann sowohl als Trockenmauer wie auch mit Mörtelfuge / Klebmörtel ausgeführt werden.

mtextur ID	64587
Manufacturer	CREABETON AG
Manufacturer-Email	info@creabeton.ch
Product Line	SPLITTWALL Mauersystem
Product Line Info	Die SPLITTWALL Mauer entsteht durch wildes Verlegen der drei Steinlängen und das Vermeiden von Kreuzfugen. Die einzelnen Steine sind einheitlich 7.5 cm dick und verhältnismässig leicht, was sie mühelos versetzen lässt. Der Natursteineffekt entsteht durch die Beimengung von feinem Splitt in die Betonmasse. SPITTWALL kann sowohl als Trockenmauer wie auch mit Mörtelfuge / Klebmörtel ausgeführt werden.
Material Name	Grau
Type	Stone / Building stone
eBKP	I 2.1 Retaining walls / I 2.1 Stützmauer
IFC	IfcCovering / IfcWall
Area of application (mtextur Classic)	Outside / Wall
Delivery zones	CH / LI
Size of the CAD & BIM texture	Height: 1650.0 mm / Width: 2000.0 mm

IMPORTANT LEGAL INFORMATION FOR USAGE OF THE MTEXTUR-DATABASE AND MTEXTUR DATASHEET:

In the mtextur-database and the mtextur-datasheet you can find a variety of high-quality digitalized materials, classified according material-type and subtype, color scope, field of application, manufacturer and product-line. The liability of the colors and the pattern of a CAD-texture can not always be guaranteed. For binding samples and additional questions please get in contact with the manufacturer or reseller directly (request link on material page). The information found on the mtextur-database is carefully collected and tested. Nevertheless are there possibilities for mistakes or wrong information. The publisher, h2c GmbH, the according manufacturers and resellers are not liable for any missing or incorrect information and its outcome, except h2c GmbH acts insofar willful.

Weight	470.0 kg/m²
--------	-------------

IMPORTANT LEGAL INFORMATION FOR USAGE OF THE MTEXTUR-DATABASE AND MTEXTUR DATASHEET:
In the mtextur-database and the mtextur-datasheet you can find a variety of high-quality digitalized materials, classified according material-type and subtype, color scope, field of application, manufacturer and product-line. The liability of the colors and the pattern of a CAD-texture can not always be guaranteed. For binding samples and additional questions please get in contact with the manufacturer or reseller directly (request link on material page). The information found on the mtextur-database is carefully collected and tested. Nevertheless are there possibilities for mistakes or wrong information. The publisher, h2c GmbH, the according manufacturers and resellers are not liable for any missing or incorrect information and its outcome, except h2c GmbH acts insofar willful.